

Key Features



Gas Leak Detection

Quick detection of methane, CO, CO2 and Volatile Organic Compounds (VOC's) leaks.



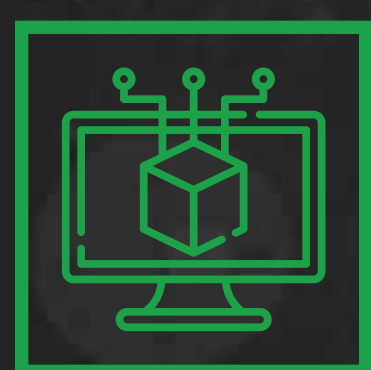
Wide Coverage

Surveillance of multiple areas and configurations with a single PT camera.



Automated Alerts

Real time indicator using alarms and visual signal alerts.



Smart Software

Dedicated management software for log and statistics.

Key Benefits



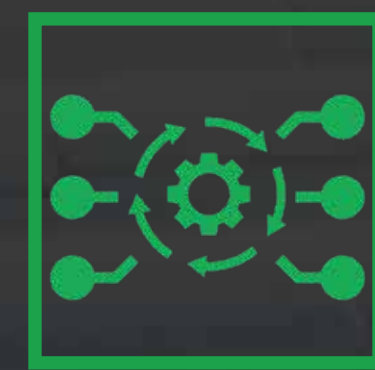
24/7 Condition Monitoring

Round the clock automated and accurate alerts customizable to suite different requirements.



Pan & Tilt Mounting

Pan & Tilt mounting enables options to surveillance multiple areas with one camera.



Versatile Communication

Modbus / OPC / ONVIF / HART Communication protocols.



Built to Last

Rugged / Pan & Tilt for outdoor use.

EyeCGas 24/7

Continuous monitoring for Methane & other VOC gas leaks, with automatic alerts via a control room and dedicated software system

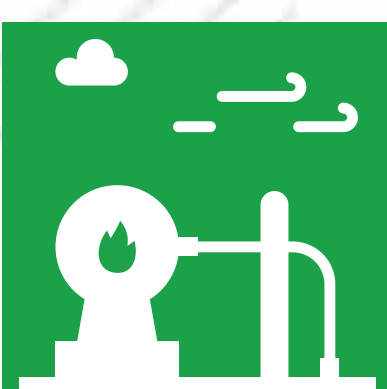


Optical Gas Imaging Solutions



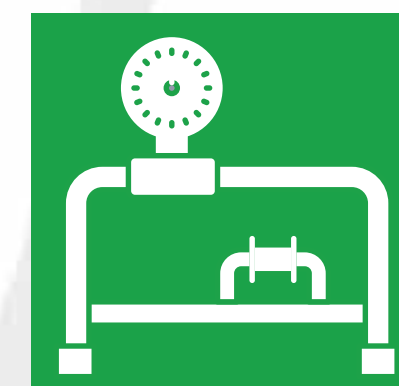
Oil Refineries

A 24/7 condition monitoring system will alert of any danger before it escalates, thus enabling quick and safe detection and visualization of fugitive emissions leaks, flare monitoring, or fire, before disaster strikes and causes irreversible damage.



Biogas and Landfills

Because gases produced by landfills are both valuable and sometimes hazardous, 24/7 monitoring is crucial. Optical Gas Imaging camers can be used to measure methane levels, as well as total VOC levels. In the U.S., it is required to install gas monitoring and control systems to alert of flares and fugitive emissions.



Compressor Stations

Compressor stations transport natural gas to long-distances. They comprise of pipes, pumps, and valves in need of constant inspection and maintenance. Depending on the gas-well location, these remote stations benefit from an automatic 24/7 monitoring solution.



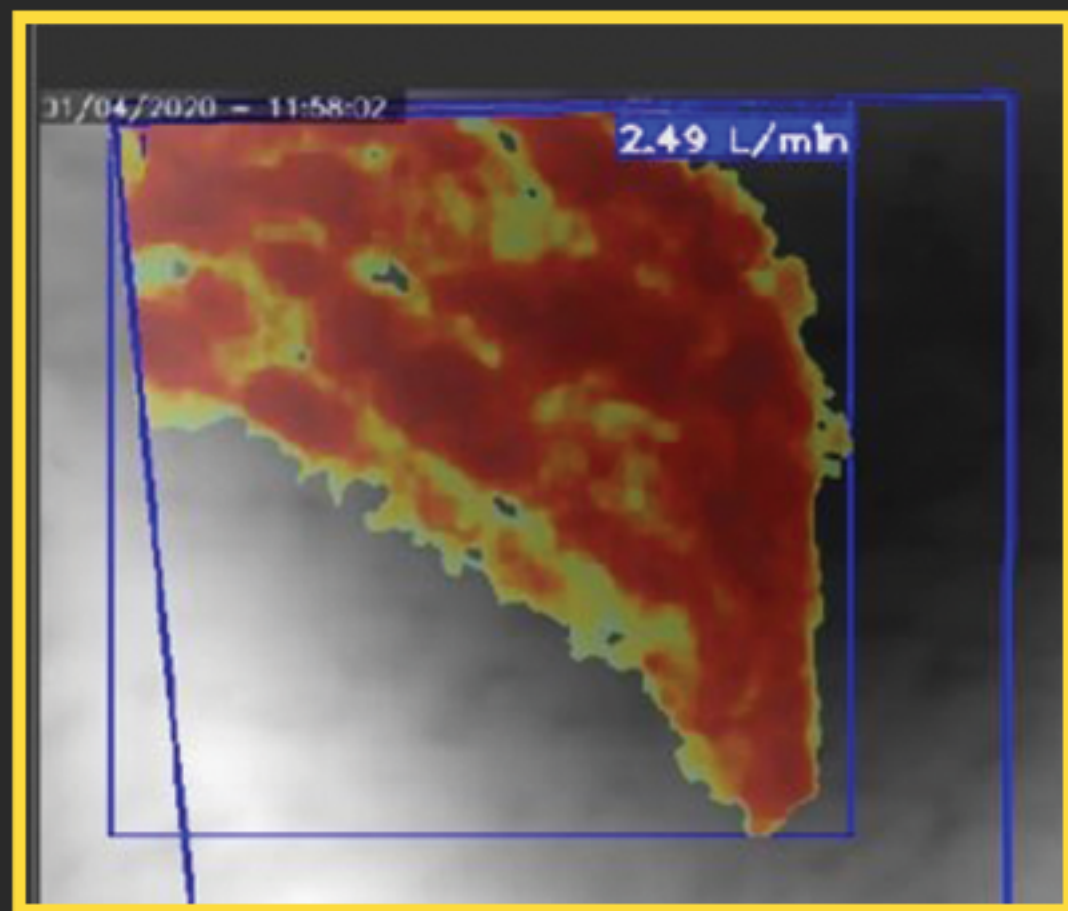
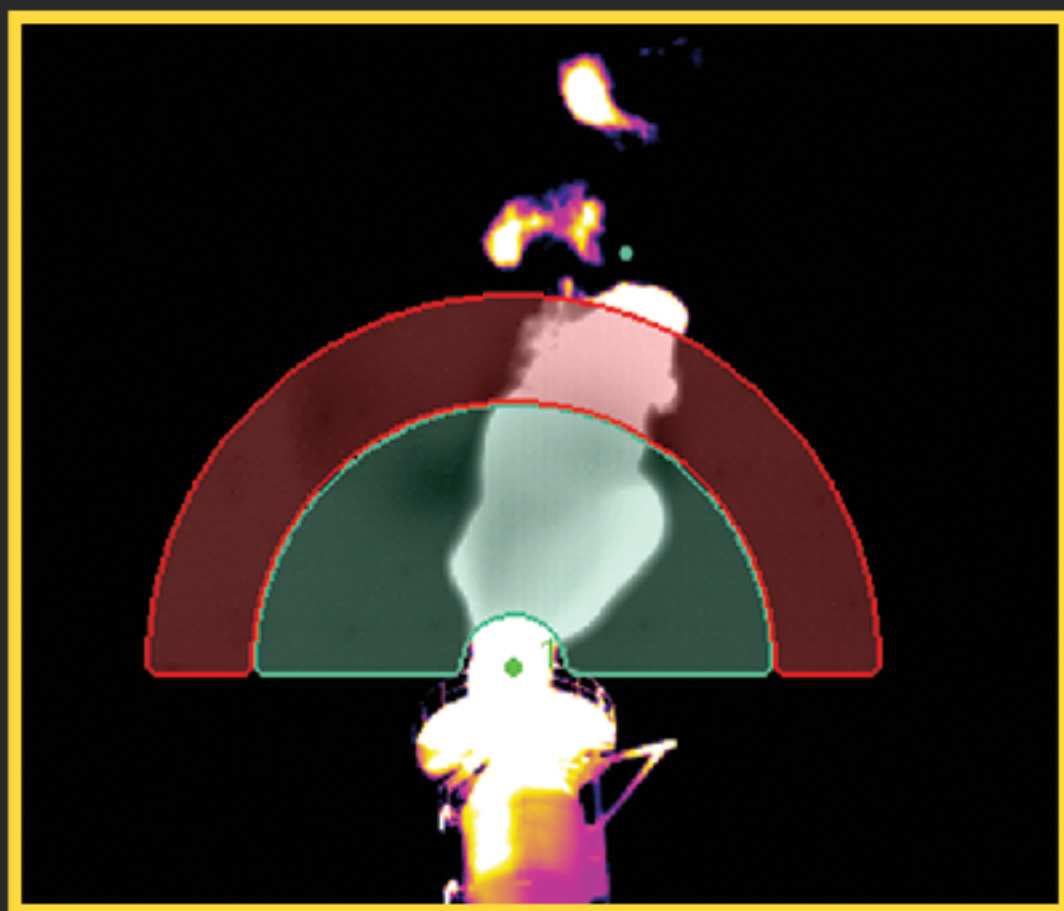
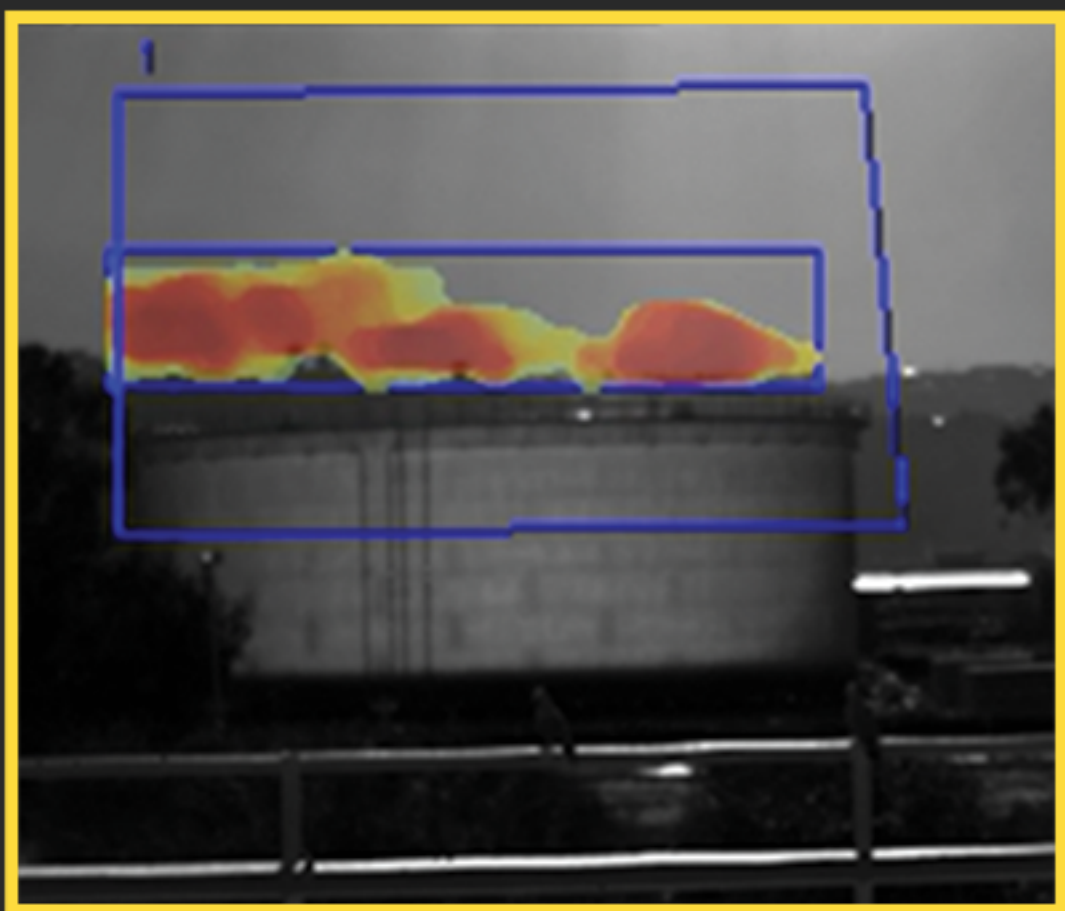
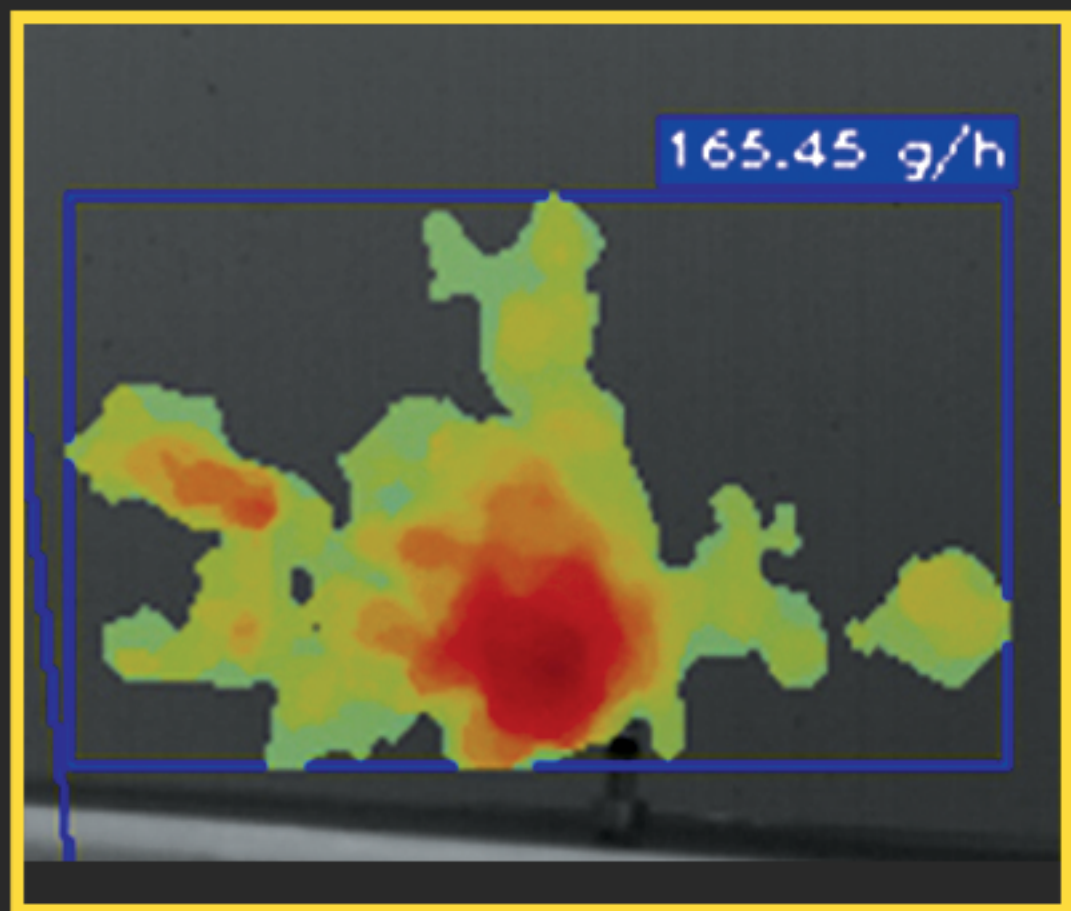
Off-Shore Oil Rigs

Off-shore drilling rigs deal with volatile substances under extreme pressure and in a hostile environment. This entails many risks, sometimes ending in tragedy. It is crucial to monitor and reach even the most remote station regularly, to catch potential leaks before they escalate.

EyeCGas 24/7

Round-the-Clock Condition Monitoring

OPGAL?
Beyond the Visible



TECHNICAL SPECIFICATIONS		
	EYECGAS 24/7	EYECGAS 24/7 PRO
THERMAL SENSITIVITY	< 22mK@ 30°C	< 10mK@ 25°C
PIXEL PITCH	17µm	30µm
FIELD OF VIEW	12° X 9°, 18° X 13°, 31° X 23°	18.5° X 13.6°
FOCUS	Fixed Focus	Fixed Focus
ACCURACY	+/-1°C (from -10°C to +60°C)	+/-1°C (from -10°C to +60°C)
DIGITAL ZOOM	Continuous up to 8x	Continuous up to 8x
DETECTOR	VO _x (3-14 µm)	MCT (3-4.4 µm)
FPA	640 x 480 pixels	320 x 240 pixels
SPECTRAL RANGE	7.5 - 9 µm for Methane Gas Detection	3.2 - 3.4 µm for VOC gases detection
POWER INPUT		
VOLTAGE	9VDC - 48VDC	12 VDC
POWER CONSUMPTION	<3W; PoE	13W
PHYSICAL CHARACTERISTICS		
WEIGHT	5 kg with sun shield	10 Kg with Sun shield
COLOR	White	White
SIZE	397mm x 110mm x 330mm without sun shield	600mm x 240mm x 220mm Including sun shield
INTERFACE	Two threaded UNC 1/4" and tripod mounting UNC 1/4", rotation safe	Two threaded UNC 1/4" and tripod mounting UNC 1/4", rotation safe
ENVIRONMENTAL CONDITIONS		
OPERATING TEMPERATURE	-20°C to +50°C	-20°C to +50°C
STORAGE TEMPERATURE	-40°C to +71°C	-40°C to +71°C
TEMPERATURE AND HUMIDITY	IEC 60068-2-30 Temp. +25°C / +40°C Humidity 95% RH	IEC 60068-2-30 Temp. +25°C / +40°C Humidity 95% RH
WATER AND DUST PROTECTION	IP66	IP65
EMC/EMI	FCC 47 CFR part 15 subpart B - Radiated Emissions EN 610000-6-4: 2007 class A - Radiated Emissions	
	EN 610000-6-2: 2005 class A - Immunity to Electrostatic Discharge (ESD) EN 610000-6- 2: 2005 class A - Radiated Immunity to RFE	
	EN 610000-6-2: 2005 class A - Radiated Immunity to Power Frequency Magnetic Field	
VIBRATION	2.4 GRMS Random Vibration	
HALT - HIGH ACCELERATED LIFE TEST	Max temp.: +50°C, Min temp.: -20°C	
SAFETY	EN60950-1:2006	EN62368-1:2014

ROUND-THE-CLOCK 24/7 MONITORING

RELEVANT APPLICATIONS



EyeCGas 24/7 ensures reliable monitoring and quick detection of Volatile Organic Compound (VOC) and methane leaks – making it the ideal tool for industrial outdoor continuous monitoring of gas leaks.



EyeCGas®



REPSS, Inc. | www.repss.com | 866-657-3777 | customerservice@repss.com