



**Sorama**  
make sound insightful

**Sorama CAM iV64** Product sheet



## Sorama CAM iV64

---

The Sorama CAM iV64 is a state-of-the-art acoustic camera, which enables you to show both highly accurate sound levels and localize where sound is coming from on the 7-inch touch display.

Specifically designed for users who want mobility and have instant acoustic information available to them, in order to perform in-field measurements with confidence.

---

### Features include:

- **Class 1 Performing SLM Functionalities**
  - **Realtime Spectrum**
  - **Realtime Spectrogram**
  - **Far Field Sound source localization and visualization**
  - **Sorama Portal compatible data for in-depth analysis**
- 



## Sorama CAM iV64

**Class 1 performing** sound level meter and portable acoustic camera.

64 MEMS microphones in a **sunflower pattern array**.

---

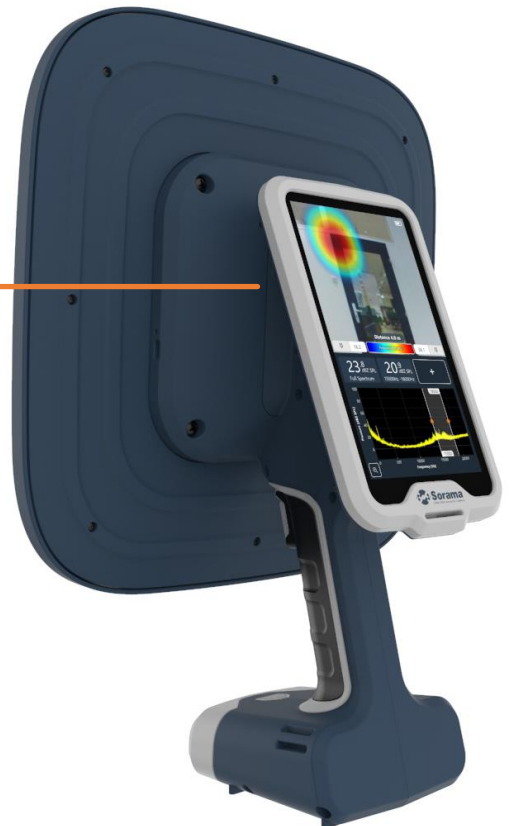
**Extremely fast GPU and CPU** for instant processing power.

Portrait oriented **7-inch** high-resolution touchscreen.

**Intuitive touch user interface** with a Sorama Portal look and feel.

---

A swappable **smart battery** allows for a full working day of operation.

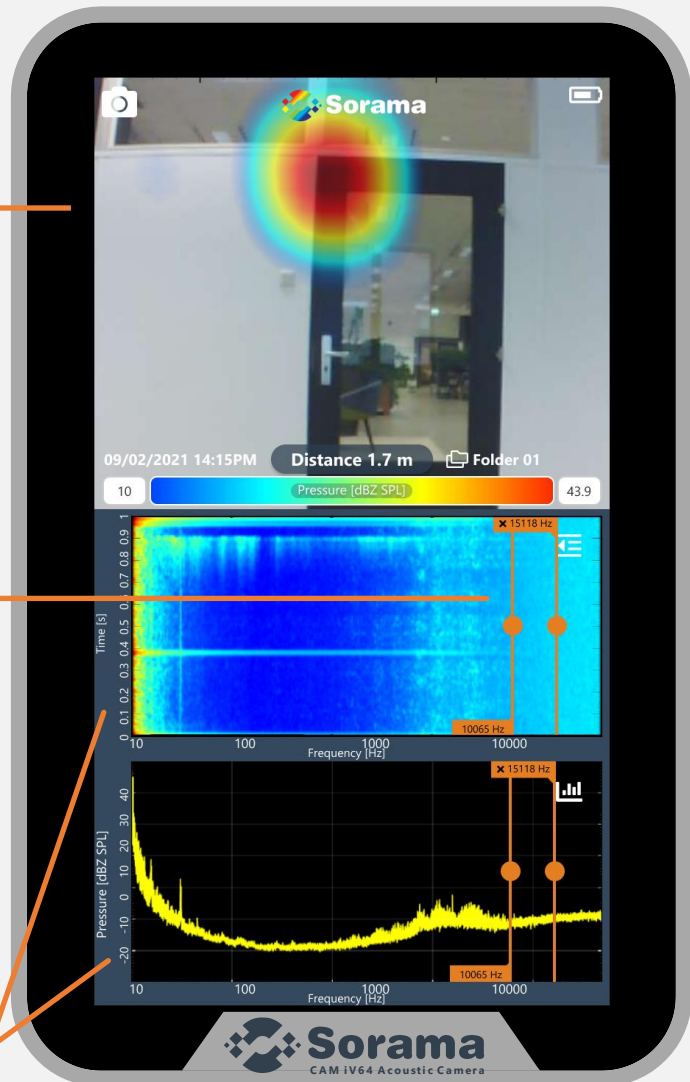


## Sorama CAM iV64 User Interface

The **portrait style user interface** is designed to provide a smartphone like feel, that is both intuitive and can be tailored to your needs.

**Easy frequency selection** by selecting a custom frequency band on the touch display.

**Spectrum** and **spectrogram** can simultaneously be displayed in real time.

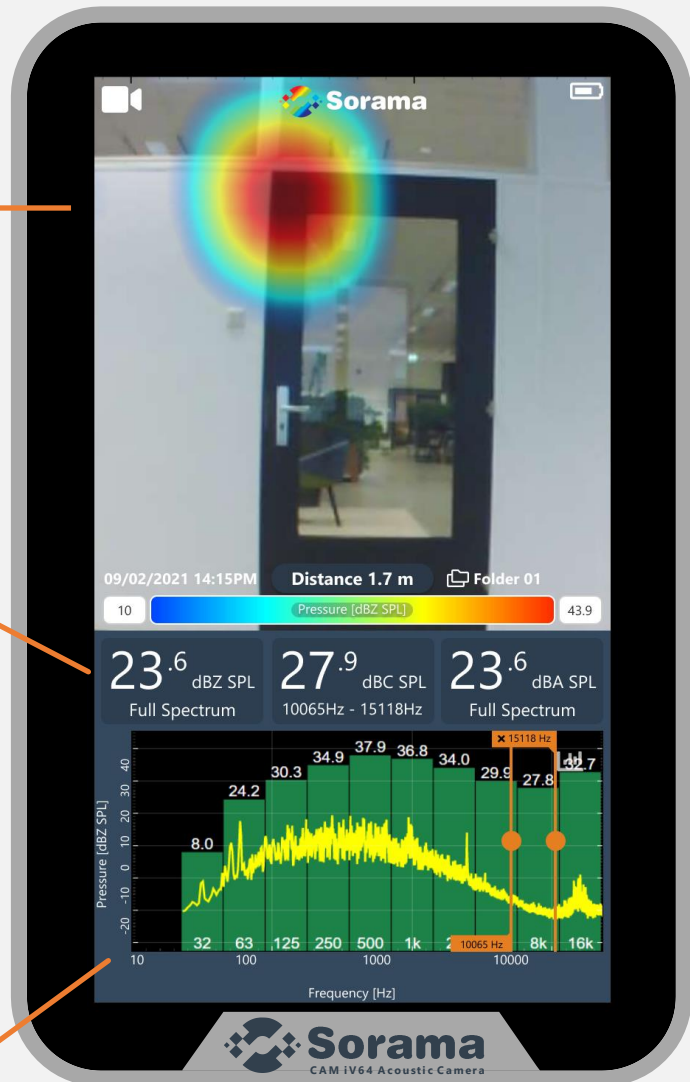


## Sorama CAM iV64 User Interface – SLM Mode

The **Sound Level Meter Mode** is designed to provide easy selectable settings and accurate SPL information including visual acoustic data.

**Full spectrum or frequency selected dB** values can be displayed simultaneously in real-time and in various Frequency- & Time Weightings.

Besides showing only spectrum information you can also overlay the spectrum with **octave bands** in 1/1 & 1/3.



## Physical Properties

Size	42 x 32 x 16 cm	L x W x D
Weight	2.32 kg	Including battery
Connectivity	USB-C	USB 3.0
Battery	Rechargeable & swappable smart battery	Battery life $\pm$ 4 hours
Hardware connections	1/4" screw connection	Tripod mountable

## Storage

Internal	Approx. 7Gb	Expandable via upgrading to SSD
External	Up to 2TB	Storage expandable with USB-C flash drive*
Storage formats	Sorama File Format containing a (video, audio and or image file)	Sorama data format compatible with Sorama Portal for data analysis

## Display & Camera

Touch display	7-inch LCD capacitive touchscreen
Display resolution	720x1280
Camera resolution	1280x960

## Microphones

Type	MEMS	Digital bottom port
SNR (A-weighted, at 1 kHz)	66 dB per channel	
Sensitivity	-37 $\pm$ 1 dB FS	At 1 kHz, 94 dB SPL
Acoustic overload point	132.5 dB SPL	At 1 kHz, <10% THD

## Measurement Features

Sampling rate	240 kHz	
Spectrum analysis	29 Hz – 27 kHz*	
Spectrogram analysis	0-10s+ 29 Hz – 27 kHz*	Streaming + recording
Beamforming (far-field)	500 Hz – 27 kHz*	Streaming + recording

\*For custom requests above the 27kHz maximum frequency limit, please contact Sorama.

\*\*Only compatible with memory sticks USB 3.1 Gen 2 or higher